



CIFRÃO

Fundação de Previdência
da Casa da Moeda do Brasil

DEMONSTRATIVO DE INVESTIMENTOS DEZEMBRO / 2025

Carteira de Investimentos

Rentabilidades

Carteira Própria - TP

Gráficos

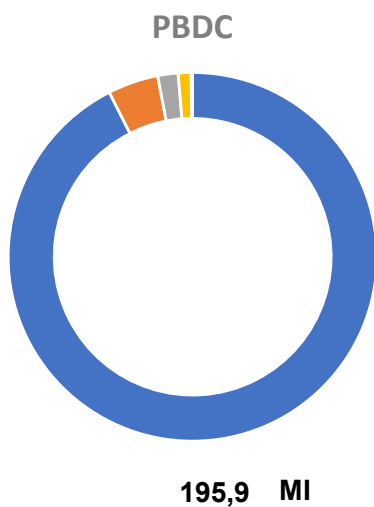
Composição de Carteira

Custos

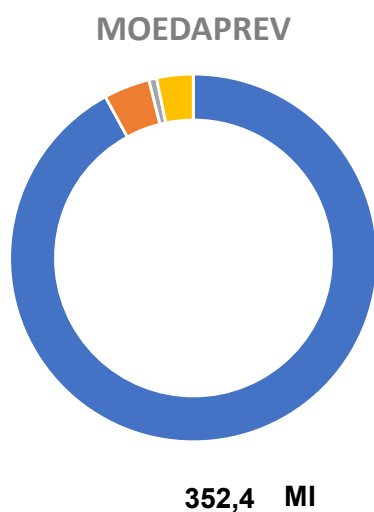
Carteira de Investimentos Dezembro/2025



DESCRIÇÃO	PLANO PBDC	% s/RG	PLANO MOEDAPREV	% s/RG	PGA	% s/RG	CONSOLIDADO	% s/RG
Renda Fixa	R\$ 181.249.155,60	92,58	R\$ 324.363.118,51	92,22	R\$ 9.927.915,98	98,02	R\$ 515.540.190,09	92,45
Títulos Públicos	R\$ 2.926.496,52	1,49	R\$ 1.463.248,26	0,42	R\$ -	0,00	R\$ 4.389.744,78	0,79
NOTA DO TESOURO NACIONAL - NTN-F	R\$ 2.926.496,52	1,49	R\$ 1.463.248,26	0,42	R\$ -	0,00	R\$ 4.389.744,78	0,79
Quotas de Fundos de Investimentos	R\$ 178.322.659,08	91,08	R\$ 322.899.870,25	91,80	R\$ 9.927.915,98	98,02	R\$ 511.150.445,31	91,66
CIFRÃO FI MULTIMERCADO PREVIDENCIÁRIO	R\$ 1.604.079,00	0,82	R\$ 113.206.950,03	32,18	R\$ 822.437,43	8,12	R\$ 115.633.466,46	20,74
CIFRÃO MACRO ESTRUTURADO MULTIMERCADO	R\$ -	0,00	R\$ 40.000.760,08	11,37	R\$ -	0,00	R\$ 40.000.760,08	7,17
CIFRAO FIRF ALM	R\$ 168.887.933,31	86,26	R\$ 130.206.532,56	37,02	R\$ -	0,00	R\$ 299.094.465,87	53,63
BRAD RF DI FED EXTRA	R\$ 7.830.646,77	4,00	R\$ 39.485.627,58	11,23	R\$ 9.105.478,55	89,90	R\$ 56.421.752,90	10,12
Renda Variável	R\$ 8.675.317,64	4,43	R\$ 14.237.076,09	4,05	R\$ -	0,00	R\$ 22.912.393,73	4,11
Quotas de Fundos de Investimentos	R\$ 8.675.317,64	4,43	R\$ 14.237.076,09	4,05	R\$ -	0,00	R\$ 22.912.393,73	4,11
CIFRAO FIC FIA	R\$ 8.675.317,64	4,43	R\$ 14.237.076,09	4,05	R\$ -	0,00	R\$ 22.912.393,73	4,11
Investimentos Imobiliários	R\$ 3.513.241,51	1,79	R\$ 2.426.758,49	0,69	R\$ -	0,00	R\$ 5.940.000,00	1,07
Operações com Participantes	R\$ 2.186.255,36	1,12	R\$ 11.358.451,16	3,23	R\$ -	0,00	R\$ 13.544.706,52	2,43
Outros Realizáveis - Investimentos	R\$ 255.840,10	0,13	R\$ -	0,00	R\$ 200.292,14	1,98	R\$ 456.132,24	0,08
Total dos Investimentos	R\$ 195.879.810,21	100,05	R\$ 352.385.404,25	100,18	R\$ 10.128.208,12	99,99	R\$ 558.393.422,58	100,13
(+) Disponível (-) Exigível Investimentos	R\$ (100.601,50)	-0,05	R\$ (639.332,67)	-0,18	R\$ 740,26	0,01	R\$ (739.193,91)	-0,13
TOTAL DOS RECURSOS GARANTIDORES	R\$ 195.779.208,71	100,00	R\$ 351.746.071,58	100,00	R\$ 10.128.948,38	100,00	R\$ 557.654.228,67	100,00






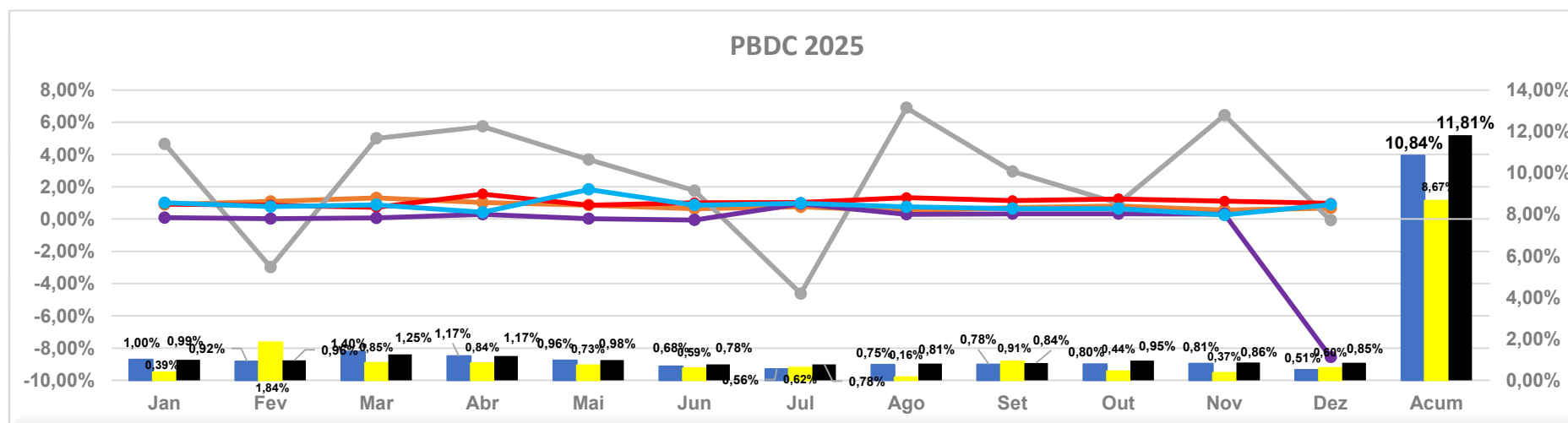
Segmento de Aplicação	MR\$	Percentual da Carteira
Renda Fixa	181,2	92,53%
Renda Variável	8,7	4,43%
Investimentos Imobiliários	3,5	1,79%
Operações com Participantes	2,2	1,12%
Outros Realizáveis - Investimentos	0,3	0,13%



Segmento de Aplicação	MR\$	Percentual da Carteira
Renda Fixa	324,4	92,05%
Renda Variável	14,2	4,04%
Investimentos Imobiliários	2,4	0,69%
Operações com Participantes	11,4	3,22%
Outros Realizáveis - Investimentos	-	0,00%

Rentabilidade do Plano PBDC - 2025









PBDC														
2025		Jan	Fev	Mar	Abr	Mai	Jun	Jul	Ago	Set	Out	Nov	Dez	Acum
RENTABILIDADE PBDC		1,00%	0,92%	1,40%	1,17%	0,96%	0,68%	0,56%	0,75%	0,78%	0,80%	0,81%	0,51%	10,84%
TAXA ATUARIAL PBDC ²		0,39%	1,84%	0,85%	0,84%	0,73%	0,59%	0,62%	0,16%	0,91%	0,44%	0,37%	0,60%	8,67%
MEDIANA PLANOS BD ¹		0,99%	0,96%	1,25%	1,17%	0,98%	0,78%	0,78%	0,81%	0,84%	0,95%	0,86%	0,85%	11,81%
Renda Fixa		0,90%	1,09%	1,31%	1,03%	0,87%	0,65%	0,76%	0,51%	0,70%	0,81%	0,56%	0,68%	10,33%
Renda Variável		4,66%	-2,98%	5,00%	5,74%	3,69%	1,75%	-4,62%	6,89%	2,95%	0,97%	6,43%	-0,08%	34,05%
Estruturado		0,93%	0,87%	0,73%	1,55%	0,87%	1,01%	1,03%	1,32%	1,13%	1,25%	1,11%	0,97%	13,54%
Imóveis		0,08%	0,03%	0,07%	0,30%	0,03%	-0,06%	0,94%	0,29%	0,33%	0,33%	0,31%	-8,55%	-6,10%
Empréstimos		1,01%	0,77%	0,88%	0,42%	1,83%	0,87%	0,98%	0,75%	0,65%	0,64%	0,25%	0,90%	10,41%

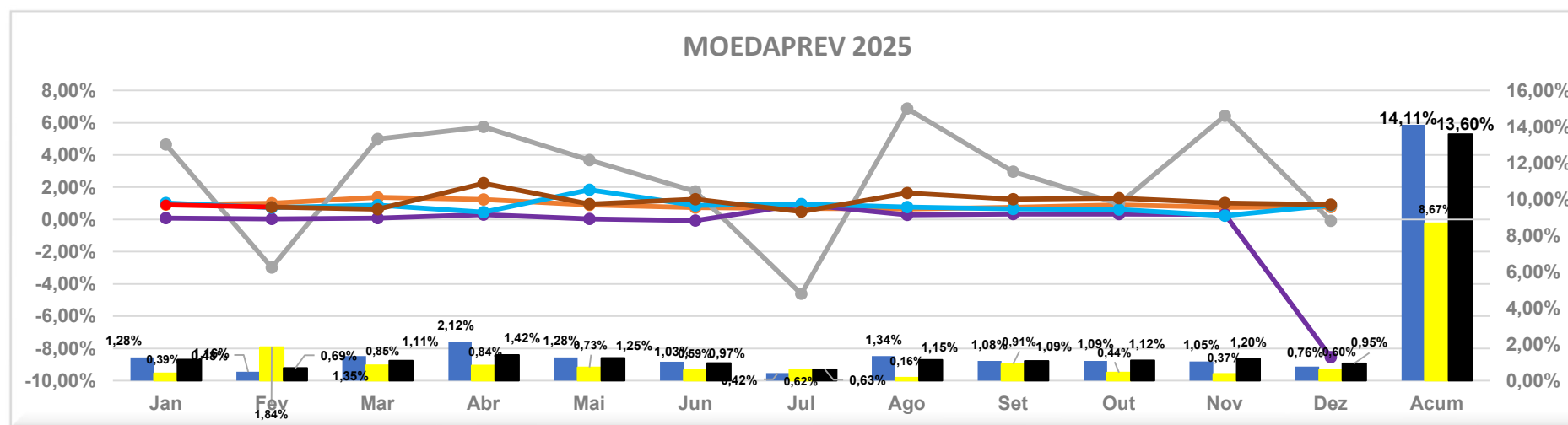


1: Estudo Comparativo de Desempenho - Aditus, Dezembro/2025

2: Taxa Atuarial PBDC INPC+ 4,59%

Rentabilidade do Plano MOEDAPREV - 2025

MOEDAPREV														
2025		Jan	Fev	Mar	Abr	Mai	Jun	Jul	Ago	Set	Out	Nov	Dez	Acum
RENTABILIDADE MOEDAPREV		1,28%	0,48%	1,35%	2,12%	1,28%	1,03%	0,42%	1,34%	1,08%	1,09%	1,05%	0,76%	14,11%
TAXA ATUARIAL MOEDAPREV ²		0,39%	1,84%	0,85%	0,84%	0,73%	0,59%	0,62%	0,16%	0,91%	0,44%	0,37%	0,60%	8,67%
MEDIANA PLANOS CV ¹		1,16%	0,69%	1,11%	1,42%	1,25%	0,97%	0,63%	1,15%	1,09%	1,12%	1,20%	0,95%	13,60%
Renda Fixa		0,92%	1,00%	1,37%	1,23%	0,91%	0,73%	0,68%	0,65%	0,75%	0,90%	0,75%	0,76%	11,18%
Renda Variável		4,66%	-2,98%	5,00%	5,74%	3,69%	1,75%	-4,62%	6,89%	2,95%	0,97%	6,43%	-0,08%	34,05%
Estruturado		0,90%	0,76%	0,63%	2,25%	0,95%	1,26%	0,49%	1,64%	1,25%	1,32%	1,01%	0,92%	14,22%
Imóveis		0,08%	0,03%	0,07%	0,30%	0,03%	-0,06%	0,94%	0,29%	0,33%	0,33%	0,31%	-8,55%	-6,10%
Empréstimos		1,02%	0,73%	0,88%	0,44%	1,84%	0,87%	0,95%	0,76%	0,65%	0,61%	0,23%	0,89%	10,32%

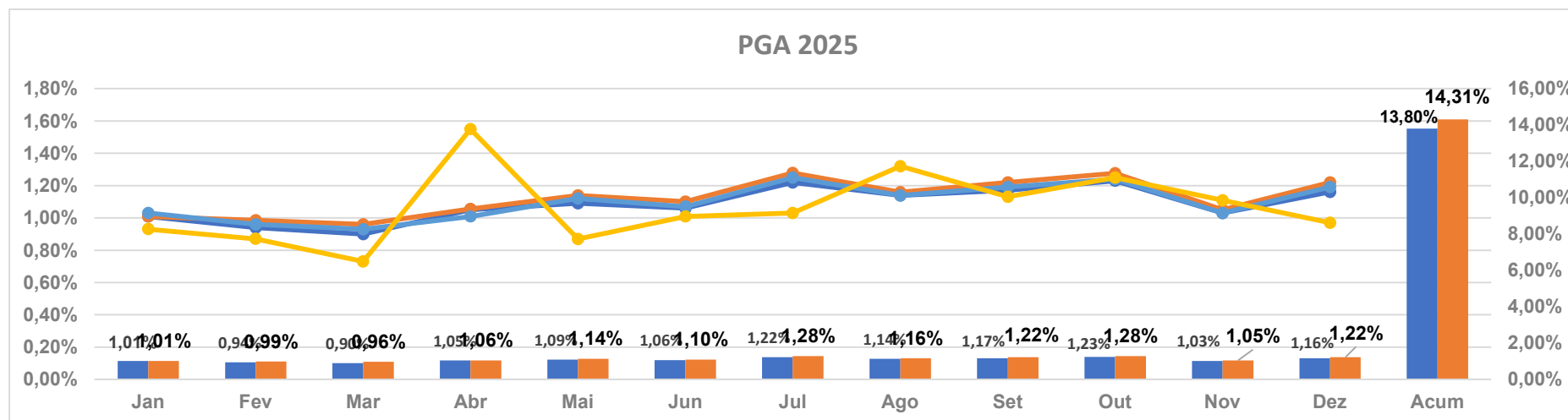


1: Estudo Comparativo de Desempenho - Aditus, Dezembro/2025

2: Taxa Atuarial MOEDAPREV INPC+ 4,59%

Rentabilidade do Plano PGA - 2025

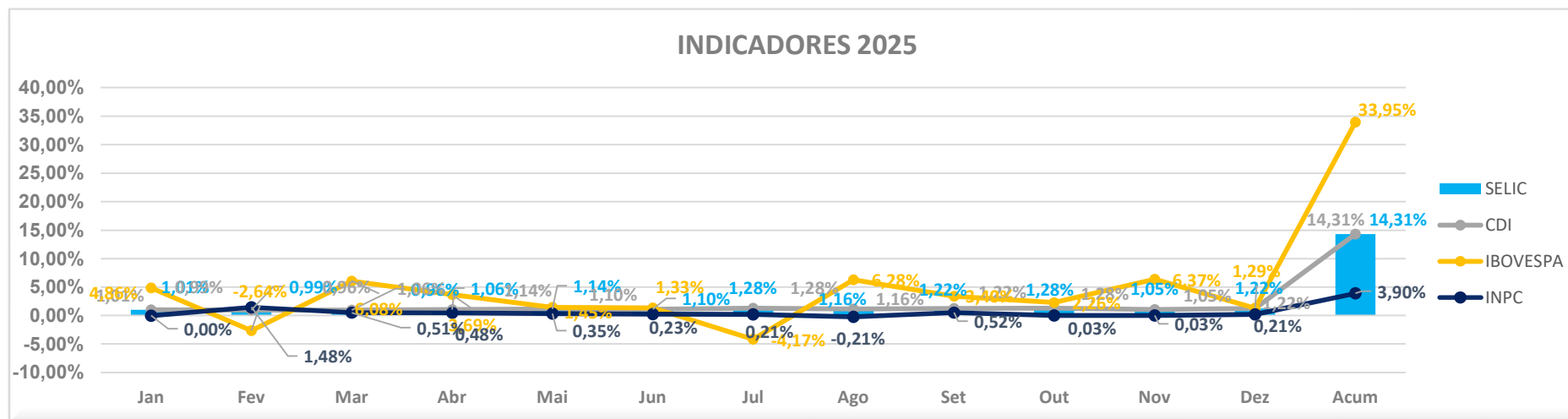
PGA													
2025	Jan	Fev	Mar	Abr	Mai	Jun	Jul	Ago	Set	Out	Nov	Dez	Acum
RENTABILIDADE PGA	1,01%	0,94%	0,90%	1,05%	1,09%	1,06%	1,22%	1,14%	1,17%	1,23%	1,03%	1,16%	13,80%
Renda Fixa	1,03%	0,96%	0,93%	1,01%	1,12%	1,07%	1,25%	1,14%	1,19%	1,24%	1,03%	1,19%	13,98%
Estruturado	0,93%	0,87%	0,73%	1,55%	0,87%	1,01%	1,03%	1,32%	1,13%	1,25%	1,11%	0,97%	13,54%
CDI	1,01%	0,99%	0,96%	1,06%	1,14%	1,10%	1,28%	1,16%	1,22%	1,28%	1,05%	1,22%	14,31%



Indicadores de Investimento - 2025

INDICADORES

2025	Jan	Fev	Mar	Abr	Mai	Jun	Jul	Ago	Set	Out	Nov	Dez	Acum
INDICADORES													
CDI	1,01%	0,99%	0,96%	1,06%	1,14%	1,10%	1,28%	1,16%	1,22%	1,28%	1,05%	1,22%	14,31%
SELIC	1,01%	0,99%	0,96%	1,06%	1,14%	1,10%	1,28%	1,16%	1,22%	1,28%	1,05%	1,22%	14,31%
IBOVESPA	4,86%	-2,64%	6,08%	3,69%	1,45%	1,33%	-4,17%	6,28%	3,40%	2,26%	6,37%	1,29%	33,95%
INPC		1,48%	0,51%	0,48%	0,35%	0,23%	0,21%	-0,21%	0,52%	0,03%	0,03%	0,21%	3,90%



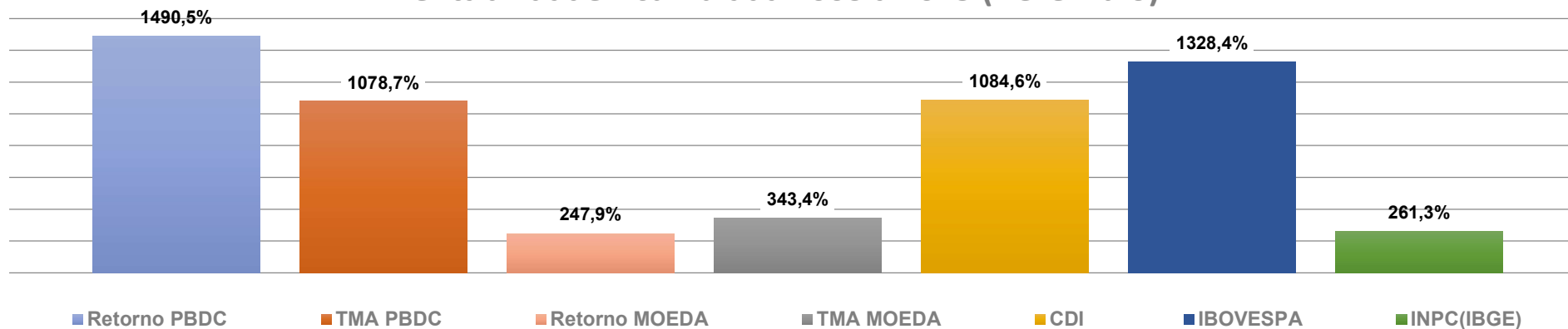
Histórico de Rentabilidade por Segmento dos Investimentos (Consolidado)



	Acumulado 2003 a 2012	2013	2014	2015	2016	2017	2018	2019	2020	2021	2022	2023	2024	2025	Acumulado Total
Renda Fixa	263,9%	7,5%	9,4%	11,7%	14,6%	9,5%	8,1%	9,7%	1,9%	3,7%	8,5%	12,1%	9,3%	11,9%	1017,3%
Renda Variável	950,5%	-5,8%	0,1%	-6,3%	32,7%	23,1%	24,0%	27,0%	-3,7%	-16,4%	4,5%	18,9%	-11,8%	4,6%	2101,8%
Invest. Estruturado	30,5%	7,1%	4,5%	8,2%	5,3%	0,0%	0,0%	0,0%	0,0%	0,0%	0,0%	0,0%	7,2%	15,2%	105,8%
Invest. Exterior	0,0%	0,0%	0,0%	0,0%	0,0%	0,0%	0,0%	0,0%	0,0%	0,0%	0,0%	0,0%	0,0%	0,0%	0,0%
Imóveis	80,9%	52,6%	17,9%	13,7%	30,4%	4,0%	7,1%	1,2%	-7,4%	9,8%	8,6%	-25,9%	6,3%	-15,9%	298,2%
Empréstimos	386,4%	15,4%	15,7%	18,5%	17,5%	9,4%	10,5%	10,7%	11,5%	17,6%	14,0%	17,0%	9,2%	11,3%	2471,3%
Global	389,0%	6,9%	7,8%	8,9%	18,2%	10,4%	11,0%	12,9%	2,9%	1,3%	10,2%	12,7%	6,6%	13,8%	1477,2%
Retorno PBDC	388,5%	6,9%	7,8%	8,9%	18,3%	10,3%	11,0%	13,0%	2,5%	2,0%	13,3%	11,4%	8,4%	10,8%	1490,5%
Retorno MOEDA	15,3%	4,7%	7,0%	8,4%	17,0%	11,1%	11,5%	12,4%	3,4%	0,5%	7,8%	13,5%	5,3%	14,1%	247,9%
TMA PBDC	213,8%	10,8%	11,5%	16,8%	12,1%	7,2%	8,6%	9,8%	10,5%	14,9%	10,8%	8,4%	9,6%	8,7%	1078,7%
TMA MOEDA	17,7%	10,8%	11,5%	16,8%	12,1%	7,2%	8,6%	9,8%	10,5%	15,3%	10,8%	8,4%	9,6%	8,7%	343,4%
Indicadores															
CDI	258,2%	8,1%	10,8%	13,3%	14,0%	9,9%	6,4%	5,8%	2,8%	4,4%	12,4%	13,1%	10,9%	14,3%	1084,6%
IBOVESPA	440,5%	-15,5%	-2,9%	-13,3%	38,9%	26,9%	15,0%	31,6%	2,9%	-11,9%	4,7%	22,3%	-10,4%	34,0%	1328,4%
INPC(IBGE)	76,9%	5,6%	6,2%	11,3%	6,8%	2,1%	3,4%	4,6%	5,4%	10,2%	5,9%	3,7%	4,8%	3,9%	261,3%

Meta Atuarial (TMA): 2003 a 2011 INPC + 6% a.a.; 2012 a 2019 INPC + 5% a.a.; a partir de 2020 INPC + 4,8% a.a.; 2021, INPC + 4,34% a.a para o Plano PBDC e INPC + 4,71% a.a para o Plano MOEDAPREV; a partir de 2022, INPC + 4,59% a.a para o Plano PBDC e INPC + 4,59% a.a para o Plano MOEDAPREV. PLANO MOEDAPREV a partir de 2011.

Rentabilidade Acumulada 2003 a 2025 (Dezembro)



Carteira Administrada PBDC - Títulos Públicos - 2025



NTN-B MERCADO	Quantidade	Cotação	Financeiro	Isin	Emissão	Data Compra	Vencimento	Quantidade	PU Compra	PU Emissao	Cupom	Indexador	Marcação
NTN-B 15/08/2050	224	4.105,41	1.231.624,35	BRSTNCNTB3D4	20100210	20251212	20500815	224	4.126,508971	1.880,923579	7,07	ICA	N
NTN-B 15/08/2050	300	4.105,41	919.612,84	BRSTNCNTB3D4	20100210	20251212	20500815	300	4.126,508971	1.880,923579	7,07	ICA	N
Sub-total	524		2.151.237,19										

NTN-B VENCIMENTO	Quantidade	Cotação	Financeiro	isin	emissão	data compra	vencimento	quantidade	PU Compra	PU Emissao	Cupom	indexador	Marcação
NTN-B 15/05/2035	464	4.778,33	2.217.142,92	BRSTNCNTB007	20060307	20251212	20350515	464	4.757,424497	1.583,857883	5,53	IPCA	CURVA
NTN-B 15/05/2045	229	4.841,94	1.108.805,29	BRSTNCNTB0A6	20040815	20251212	20450515	229	4.820,608471	1.441,837730	5,60	IPCA	CURVA
NTN-B 15/05/2055	1.000	5.823,92	5.823.923,50	BRSTNCNTB4Q4	20150114	20251212	20550515	1.000	5.801,448352	2.513,506788	4,39	IPCA	CURVA
NTN-B 15/08/2040	500	5.171,52	2.585.759,95	BRSTNCNTB3C6	20100210	20251212	20400815	500	5.150,209587	1.880,923579	4,97	IPCA	CURVA
NTN-B 15/05/2055	507	5.094,28	2.582.800,48	BRSTNCNTB4Q4	20150114	20251212	20550515	507	5.072,497337	2.513,506788	5,31	IPCA	CURVA
NTN-B 15/05/2055	118	5.100,35	601.841,13	BRSTNCNTB4Q4	20150114	20251212	20550515	118	5.078,558433	2.513,506788	5,30	IPCA	CURVA
NTN-B 15/05/2055	660	5.100,35	3.366.230,06	BRSTNCNTB4Q4	20150114	20251212	20550515	660	5.078,558433	2.513,506788	5,30	IPCA	CURVA
NTN-B 15/05/2055	200	5.041,25	1.008.250,16	BRSTNCNTB4Q4	20150114	20251212	20550515	200	5.019,524086	2.513,506788	5,39	IPCA	CURVA
NTN-B 15/08/2040	3.533	4.559,44	16.108.506,78	BRSTNCNTB3C6	20100210	20251212	20400815	3.533	4.537,877008	1.880,923579	6,33	IPCA	CURVA
NTN-B 15/05/2035	711	4.519,33	3.213.242,63	BRSTNCNTB007	20060307	20251212	20350515	711	4.497,908960	1.583,857883	6,35	IPCA	CURVA
NTN-B 15/05/2045	699	4.779,57	3.340.919,97	BRSTNCNTB0A6	20040815	20251212	20450515	699	4.758,260324	1.441,837730	5,72	IPCA	CURVA
NTN-B 15/05/2045	918	4.845,46	4.448.131,54	BRSTNCNTB0A6	20040815	20251212	20450515	918	4.824,121810	1.441,837730	5,60	IPCA	CURVA
NTN-B 15/05/2055	1.000	5.859,09	5.859.086,40	BRSTNCNTB4Q4	20150114	20251212	20550515	1.000	5.836,582115	2.513,506788	4,35	IPCA	CURVA
NTN-B 15/08/2050	1.000	5.123,49	5.123.487,10	BRSTNCNTB3D4	20100210	20251212	20500815	1.000	5.101,578567	1.880,923579	5,31	IPCA	CURVA
NTN-B 15/05/2055	900	5.158,43	4.642.584,49	BRSTNCNTB4Q4	20150114	20251212	20550515	900	5.136,575859	2.513,506788	5,22	IPCA	CURVA
NTN-B 15/05/2055	463	5.100,35	2.361.461,39	BRSTNCNTB4Q4	20150114	20251212	20550515	463	5.078,558433	2.513,506788	5,30	IPCA	CURVA
NTN-B 15/08/2050	500	5.061,95	2.530.974,31	BRSTNCNTB3D4	20100210	20251212	20500815	500	5.040,086546	1.880,923579	5,41	IPCA	CURVA
NTN-B 15/08/2032	175	4.679,41	818.896,51	BRSTNCNTB674	20220104	20251212	20320815	175	4.657,863874	3.779,618314	6,04	IPCA	CURVA
NTN-B 15/05/2033	232	4.558,28	1.057.519,95	BRSTNCNTB6B1	20230104	20251212	20330515	232	4.536,862043	4.000,666480	6,25	IPCA	CURVA
NTN-B 15/05/2035	220	4.609,20	1.014.024,12	BRSTNCNTB007	20060307	20251212	20350515	220	4.587,952000	1.583,857883	6,06	IPCA	CURVA
NTN-B 15/05/2055	500	5.751,28	2.875.641,79	BRSTNCNTB4Q4	20150114	20251212	20550515	500	5.728,869792	2.513,506788	4,47	IPCA	CURVA
NTN-B 15/08/2050	1.000	5.276,71	5.276.711,85	BRSTNCNTB3D4	20100210	20251212	20500815	1.000	5.254,694153	1.880,923579	5,08	IPCA	CURVA
NTN-B 15/05/2055	1.000	5.285,05	5.285.051,81	BRSTNCNTB4Q4	20150114	20251212	20550515	1.000	5.263,070875	2.513,506788	5,05	IPCA	CURVA
NTN-B 15/08/2050	675	5.263,06	3.552.564,40	BRSTNCNTB3D4	20100210	20251212	20500815	675	5.241,050034	1.880,923579	5,10	IPCA	CURVA
NTN-B 15/08/2050	900	5.263,06	4.736.752,54	BRSTNCNTB3D4	20100210	20251212	20500815	900	5.241,050034	1.880,923579	5,10	IPCA	CURVA
NTN-B 15/05/2055	100	5.158,43	515.842,72	BRSTNCNTB4Q4	20150114	20251212	20550515	100	5.136,575859	2.513,506788	5,22	IPCA	CURVA
NTN-B 15/08/2032	222	4.629,82	1.027.820,59	BRSTNCNTB674	20220104	20251212	20320815	222	4.608,074204	3.779,618314	6,25	IPCA	CURVA
NTN-B 15/05/2033	148	4.617,80	683.434,13	BRSTNCNTB6B1	20230104	20251212	20330515	148	4.596,579082	4.000,666480	6,02	IPCA	CURVA
NTN-B 15/05/2033	287	4.655,74	1.336.197,96	BRSTNCNTB6B1	20230104	20251212	20330515	287	4.634,649716	4.000,666480	5,88	IPCA	CURVA
NTN-B 15/05/2035	220	4.665,50	1.026.409,71	BRSTNCNTB007	20060307	20251212	20350515	220	4.644,362167	1.583,857883	5,88	IPCA	CURVA
NTN-B 15/05/2045	948	4.711,00	4.466.032,22	BRSTNCNTB0A6	20040815	20251212	20450515	948	4.689,724608	1.441,837730	5,85	IPCA	CURVA
NTN-B 15/05/2045	950	4.718,38	4.482.460,39	BRSTNCNTB0A6	20040815	20251212	20450515	950	4.697,096094	1.441,837730	5,84	IPCA	CURVA
NTN-B 15/05/2035	229	4.807,83	1.100.994,01	BRSTNCNTB007	20060307	20251212	20350515	229	4.786,997433	1.583,857883	5,44	IPCA	CURVA
NTN-B 15/08/2050	500	5.753,10	2.876.549,93	BRSTNCNTB3D4	20100210	20251212	20500815	500	5.730,800204	1.880,923579	4,43	IPCA	CURVA
NTN-B 15/05/2055	250	5.777,52	1.444.379,86	BRSTNCNTB4Q4	20150114	20251212	20550515	250	5.755,083318	2.513,506788	4,44	IPCA	CURVA
NTN-B 15/05/2055	500	5.823,92	2.911.961,75	BRSTNCNTB4Q4	20150114	20251212	20550515	500	5.801,448352	2.513,506788	4,39	IPCA	CURVA
NTN-B 15/08/2050	1.000	5.791,28	5.791.275,85	BRSTNCNTB3D4	20100210	20251212	20500815	1.000	5.768,957234	1.880,923579	4,38	IPCA	CURVA
NTN-B 15/05/2055	1.000	5.727,12	5.727.115,59	BRSTNCNTB4Q4	20150114	20251212	20550515	1.000	5.704,722578	2.513,506788	4,50	IPCA	CURVA
NTN-B 15/08/2040	250	5.184,64	1.296.160,78	BRSTNCNTB3C6	20100210	20251212	20400815	250	5.163,341148	1.880,923579	4,94	IPCA	CURVA
NTN-B 15/05/2035	1.400	4.908,03	6.871.245,20	BRSTNCNTB007	20060307	20251212	20350515	1.400	4.887,420560	1.583,857883	5,14	IPCA	CURVA
NTN-B 15/08/2028	1.430	4.786,16	6.844.206,44	BRSTNCNTB4X0	20180110	20251212	20280815	1.430	4.766,243416	3.042,853830	5,06	IPCA	CURVA
NTN-B 15/08/2030	2.192	4.859,11	10.651.165,50	BRSTNCNTB3B8	20100210	20251212	20300815	2.192	4.838,875694	1.880,923579	5,06	IPCA	CURVA
NTN-B 15/08/2030	291	4.698,06	1.367.135,20	BRSTNCNTB3B8	20100210	20251212	20300815	291	4.676,617519	1.880,923579	5,95	IPCA	CURVA
NTN-B 15/05/2035	1.021	4.553,96	4.649.589,13	BRSTNCNTB007	20060307	20251212	20350515	1.021	4.532,601191	1.583,857883	6,23	IPCA	CURVA
NTN-B 15/08/2030	445	4.699,87	2.091.443,27	BRSTNCNTB3B8	20100210	20251212	20300815	445	4.678,444195	1.880,923579	5,94	IPCA	CURVA
NTN-B 15/08/2032	584	4.600,70	2.686.811,64	BRSTNCNTB674	20220104	20251212	20320815	584	4.578,838945	3.779,618314	6,38	IPCA	CURVA
NTN-B 15/05/2033	711	4.531,81	3.222.113,86	BRSTNCNTB6B1	20230104	20251212	20330515	711	4.510,307297	4.000,666480	6,36	IPCA	CURVA
NTN-B 15/05/2045	478	4.470,93	2.137.102,52	BRSTNCNTB0A6	20040815	20251212	20450515	478	4.449,774293	1.441,837730	6,33	IPCA	CURVA
Sub-total	33.260		166.747.759,32										

NTN-F MERCADO	Quantidade	Cotação	Financeiro	isin	emissão	data compra	vencimento	quantidade	PU Compra	PU Emissao	Cupom	indexador	Marcação
NTN-F 01/01/2029	3.000	975,50	2.926.496,52	BRSTNCNTF1Q6	20180105	20200921	20290101	3.000	1.195,897252	1.000,000000	7,11	PRE	MTM
Sub-total	3.000		2.926.496,52										

CR / CP / TESOURARIA (11.046,87)

Total PBDC 36.784 171.814.446,16

Carteira Administrada MOEDAPREV - Títulos Públicos - 2025



NTN-B MERCADO	Quantidade	Cotação	Financeiro	Isin	Emissão	Data Compra	Vencimento	Quantidade	PU Compra	PU Emissao	Cupom	Indexador	Marcação
NTN-B 15/05/2035	518	4.448,97	2.183.414,31	BRSTNCNTB007	20060307	20251212	20350515	518	4.203,201337	1.583,857883	7,35	IPCA	MTM
NTN-B 15/05/2033	264	4.214,76	1.112.695,56	BRSTNCNTB661	20230104	20251212	20350515	264	4.214,387830	4.000,666480	7,57	IPCA	MTM
NTN-B 15/08/2032	312	4.312,54	1.345.511,65	BRSTNCNTB674	20220104	20251212	20320815	312	4.306,648979	3.779,618314	7,58	IPCA	MTM
NTN-B 15/08/2030	195	4.396,61	857.339,26	BRSTNCNTB388	20100210	20251212	20300815	195	4.368,138132	1.880,923579	7,77	IPCA	MTM
NTN-B 15/08/2030	892	4.396,61	3.921.777,55	BRSTNCNTB388	20100210	20251212	20300815	892	4.368,138132	1.880,923579	7,77	IPCA	MTM
NTN-B 15/08/2030	388	4.396,61	1.705.885,30	BRSTNCNTB388	20100210	20251212	20300815	388	4.368,138132	1.880,923579	7,77	IPCA	MTM
NTN-B 15/08/2030	196	4.396,61	861.735,87	BRSTNCNTB388	20100210	20251212	20300815	196	4.368,138132	1.880,923579	7,77	IPCA	MTM
Sub-total	2.765		11.988.359,50										

NTN-B VENCIMENTO	Quantidade	Cotação	Financeiro	Isin	emissão	data compra	vencimento	quantidade	PU Compra	PU Emissao	Cupom	indexador	Marcação
NTN-B 15/08/2040	306	4.126,42	1.262.684,35	BRSTNCNTB3C6	20100210	20251212	20400815	306	4.104,846996	1.880,923579	7,45	IPCA	CURVA
NTN-B 15/08/2050	150	5.024,96	753.743,52	BRSTNCNTB3D4	20100210	20251212	20500815	150	5.003,123414	1.880,923579	5,47	IPCA	CURVA
NTN-B 15/05/2055	500	4.914,17	2.457.083,95	BRSTNCNTB4Q4	20150114	20251212	20550515	500	4.892,518643	2.513,506788	5,57	IPCA	CURVA
NTN-B 15/08/2050	250	5.135,38	1.283.845,27	BRSTNCNTB3D4	20100210	20251212	20500815	250	5.113,463731	1.880,923579	5,29	IPCA	CURVA
NTN-B 15/08/2050	130	5.082,68	660.748,70	BRSTNCNTB3D4	20100210	20251212	20500815	130	5.060,804420	1.880,923579	5,38	IPCA	CURVA
NTN-B 15/08/2040	71	4.579,06	325.113,39	BRSTNCNTB3C6	20100210	20251212	20400815	71	4.557,501239	1.880,923579	6,28	IPCA	CURVA
NTN-B 15/08/2030	1.550	4.429,32	6.865.442,31	BRSTNCNTB388	20100210	20251212	20300815	1.550	4.405,993417	1.880,923579	7,54	IPCA	CURVA
NTN-B 15/05/2055	250	5.777,52	1.444.379,85	BRSTNCNTB4Q4	20150114	20251212	20550515	250	5.755,083288	2.513,506788	4,44	IPCA	CURVA
NTN-B 15/05/2050	500	5.751,28	2.875.641,79	BRSTNCNTB4Q4	20150114	20251212	20550515	500	5.728,869792	2.513,506788	4,47	IPCA	CURVA
NTN-B 15/05/2055	500	5.823,92	2.911.961,74	BRSTNCNTB4Q4	20150114	20251212	20550515	500	5.801,448333	2.513,506788	4,39	IPCA	CURVA
NTN-B 15/08/2050	94	5.313,59	499.477,01	BRSTNCNTB3D4	20100210	20251212	20500815	94	5.291,542670	1.880,923579	5,03	IPCA	CURVA
NTN-B 15/08/2050	500	5.206,46	2.603.230,55	BRSTNCNTB3D4	20100210	20251212	20500815	500	5.184,492304	1.880,923579	5,19	IPCA	CURVA
NTN-B 15/08/2050	500	5.124,34	2.562.170,68	BRSTNCNTB3D4	20100210	20251212	20500815	500	5.102,432190	1.880,923579	5,31	IPCA	CURVA
NTN-B 15/05/2055	500	4.929,38	2.464.690,74	BRSTNCNTB4Q4	20150114	20251212	20550515	500	4.907,778121	2.513,506788	5,55	IPCA	CURVA
NTN-B 15/08/2050	150	5.135,38	770.307,16	BRSTNCNTB3D4	20100210	20251212	20500815	150	5.113,463700	1.880,923579	5,29	IPCA	CURVA
NTN-B 15/08/2050	600	5.135,38	3.081.228,65	BRSTNCNTB3D4	20100210	20251212	20500815	600	5.113,463738	1.880,923579	5,29	IPCA	CURVA
NTN-B 15/05/2045	73	4.470,93	326.377,58	BRSTNCNTB0A6	20040815	20251212	20450515	73	4.449,774293	1.441,837730	6,33	IPCA	CURVA
NTN-B 15/08/2032	526	4.377,79	2.302.720,14	BRSTNCNTB674	20220104	20251212	20320815	526	4.355,075756	3.779,618314	7,36	IPCA	CURVA
NTN-B 15/08/2030	173	4.418,75	764.443,43	BRSTNCNTB388	20100210	20251212	20300815	173	4.395,353440	1.880,923579	7,60	IPCA	CURVA
NTN-B 15/08/2050	500	5.753,10	2.876.549,92	BRSTNCNTB3D4	20100210	20251212	20500815	500	5.730,800194	1.880,923579	4,43	IPCA	CURVA
NTN-B 15/08/2050	906	5.313,59	4.814.108,25	BRSTNCNTB3D4	20100210	20251212	20500815	906	5.291,542670	1.880,923579	5,03	IPCA	CURVA
NTN-B 15/05/2033	1.132	4.201,52	4.756.119,03	BRSTNCNTB661	20230104	20251212	20330515	1.132	4.179,054048	4.000,666480	7,72	IPCA	CURVA
NTN-B 15/08/2032	1.215	4.287,85	5.209.733,98	BRSTNCNTB674	20220104	20251212	20320815	1.215	4.264,807691	3.779,618314	7,78	IPCA	CURVA
NTN-B 15/08/2030	763	4.399,44	3.356.770,19	BRSTNCNTB388	20100210	20251212	20300815	763	4.375,913910	1.880,923579	7,72	IPCA	CURVA
NTN-B 15/05/2055	500	5.823,92	2.911.961,74	BRSTNCNTB4Q4	20150114	20251212	20550515	500	5.801,448333	2.513,506788	4,39	IPCA	CURVA
NTN-B 15/05/2055	1.000	5.727,12	5.727.115,58	BRSTNCNTB4Q4	20150114	20251212	20550515	1.000	5.704,722569	2.513,506788	4,50	IPCA	CURVA
NTN-B 15/08/2050	1.500	5.297,38	7.946.077,36	BRSTNCNTB3D4	20100210	20251212	20500815	1.500	5.275,353189	1.880,923579	5,05	IPCA	CURVA
NTN-B 15/05/2055	1.000	5.238,62	5.238.618,27	BRSTNCNTB4Q4	20150114	20251212	20550515	1.000	5.216,684236	2.513,506788	5,11	IPCA	CURVA
NTN-B 15/05/2055	500	5.140,09	2.570.045,46	BRSTNCNTB4Q4	20150114	20251212	20550515	500	5.118,258770	2.513,506788	5,25	IPCA	CURVA
NTN-B 15/08/2050	150	5.024,96	753.743,52	BRSTNCNTB3D4	20100210	20251212	20500815	150	5.003,123414	1.880,923579	5,47	IPCA	CURVA
NTN-B 15/08/2050	499	5.081,52	2.535.677,43	BRSTNCNTB3D4	20100210	20251212	20500815	499	5.059,640887	1.880,923579	5,38	IPCA	CURVA
NTN-B 15/08/2030	94	4.625,67	434.812,59	BRSTNCNTB388	20100210	20251212	20300815	94	4.603,700247	1.880,923579	6,37	IPCA	CURVA
NTN-B 15/08/2050	370	5.082,68	1.880.592,47	BRSTNCNTB3D4	20100210	20251212	20500815	370	5.060,804462	1.880,923579	5,38	IPCA	CURVA
NTN-B 15/08/2050	501	5.081,52	2.545.840,47	BRSTNCNTB3D4	20100210	20251212	20500815	501	5.059,640890	1.880,923579	5,38	IPCA	CURVA
NTN-B 15/05/2035	96	4.519,33	433.855,54	BRSTNCNTB007	20060307	20251212	20350515	96	4.497,908960	1.583,857883	6,35	IPCA	CURVA
NTN-B 15/08/2030	518	4.448,97	2.304.564,35	BRSTNCNTB388	20100210	20251212	20300815	518	4.425,773490	1.880,923579	7,42	IPCA	CURVA
NTN-B 15/08/2030	520	4.431,68	2.304.471,63	BRSTNCNTB388	20100210	20251212	20300815	520	4.408,367767	1.880,923579	7,52	IPCA	CURVA
NTN-B 15/08/2032	528	4.361,08	2.302.641,65	BRSTNCNTB674	20220104	20251212	20320815	528	4.338,295343	3.779,618314	7,44	IPCA	CURVA
NTN-B 15/08/2032	176	4.350,18	765.631,61	BRSTNCNTB674	20220104	20251212	20320815	176	4.327,360672	3.779,618314	7,49	IPCA	CURVA
NTN-B 15/08/2032	1.570	4.365,34	6.853.582,32	BRSTNCNTB674	20220104	20251212	20320815	1.570	4.342,574706	3.779,618314	7,42	IPCA	CURVA
NTN-B 15/08/2030	834	4.625,67	3.857.805,31	BRSTNCNTB388	20100210	20251212	20300815	834	4.603,700247	1.880,923579	6,37	IPCA	CURVA
NTN-B 15/05/2035	853	4.519,33	3.854.987,29	BRSTNCNTB007	20060307	20251212	20350515	853	4.497,908960	1.583,857883	6,35	IPCA	CURVA
NTN-B 15/05/2045	646	4.470,93	2.888.218,05	BRSTNCNTB0A6	20040815	20251212	20450515	646	4.449,774293	1.441,837730	6,33	IPCA	CURVA
NTN-B 15/08/2040	631	4.579,06	2.889.388,03	BRSTNCNTB3C6	20100210	20251212	20400815	631	4.557,501239	1.880,923579	6,28	IPCA	CURVA
Sub-total	24.325		118.228.208,85										

NTN-F MERCADO	Quantidade	Cotação	Financeiro	Isin	emissão	data compra	vencimento	quantidade	PU Compra	PU Emissao	Cupom	indexador	Marcação
NTN-F 01/01/2029	1.500	975,50	1.463.248,26	BRSTNCNTF1Q6	20180105	20191022	20290101	1.500	1.259,806313	1.000,000000	6,55	PRE	MTM
Sub-total	1.500		1.463.248,26										

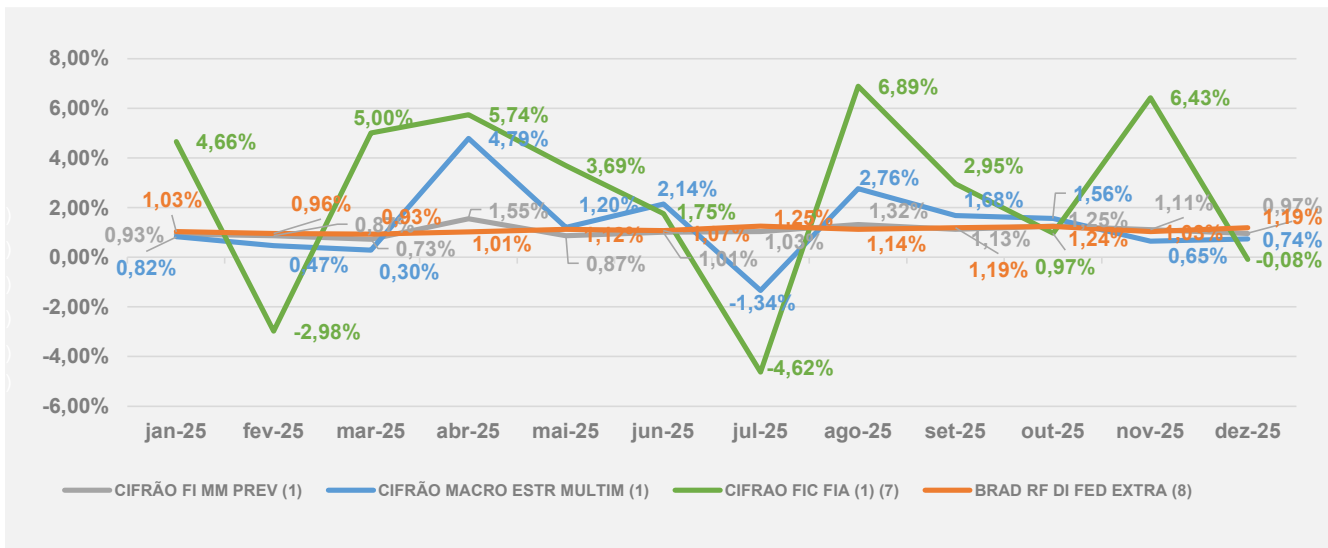
CR / CP / TESOURARIA (10.034,85)

Total MOEDAPREV 28.590 131.669.781,76

Rentabilidade dos Fundos de Investimentos - 2025



	jan	fev	mar	abr	mai	jun	jul	ago	set	out	nov	dez	2025	2024	2023	2022	2021	2020	
FUNDO EXCLUSIVO																			
CIFRÃO FI MM PREV (1)	0,93%	0,87%	0,73%	1,55%	0,87%	1,01%	1,03%	1,32%	1,13%	1,25%	1,11%	0,97%	13,53%	7,76%	12,96%	10,96%	3,61%	1,41%	
CIFRÃO MACRO ESTR MULTIM (1)	0,82%	0,47%	0,30%	4,79%	1,20%	2,14%	-1,34%	2,76%	1,68%	1,56%	0,65%	0,74%	16,80%	4,86%	12,45%	8,47%	-2,38%	7,57%	
CIFRAO FIC FIA (1) (7)	4,66%	-2,98%	5,00%	5,74%	3,69%	1,75%	-4,62%	6,89%	2,95%	0,97%	6,43%	-0,08%	34,06%	-11,96%	8,37%				
FUNDO NÃO EXCLUSIVO																			
BRAD RF DI FED EXTRA (8)	1,03%	0,96%	0,93%	1,01%	1,12%	1,07%	1,25%	1,14%	1,19%	1,24%	1,03%	1,19%	13,98%	10,58%	2,75%				



(1) Fundos exclusivos - Cifrao é a única Cotista

(2) Início Abril de 2016

(5) Início Novembro de 2017

(7) Início Novembro de 2019

(8) Início Novembro de (7) Início Julho de 2023

(8) Início Outubro de 2023

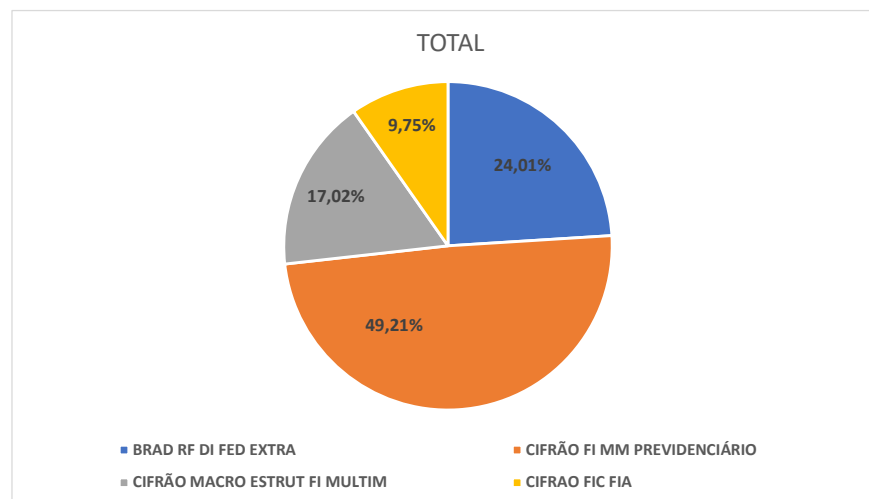
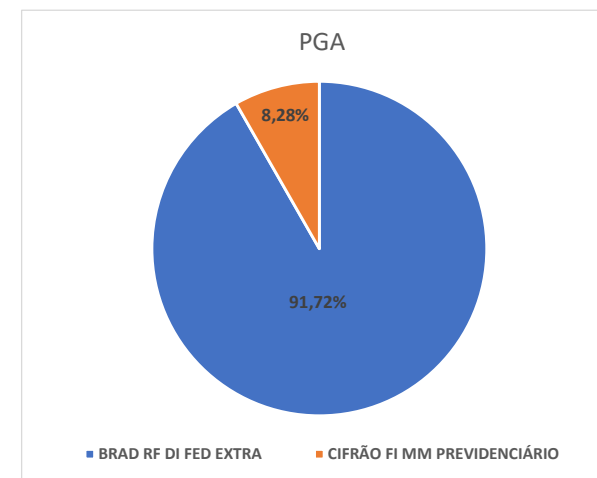
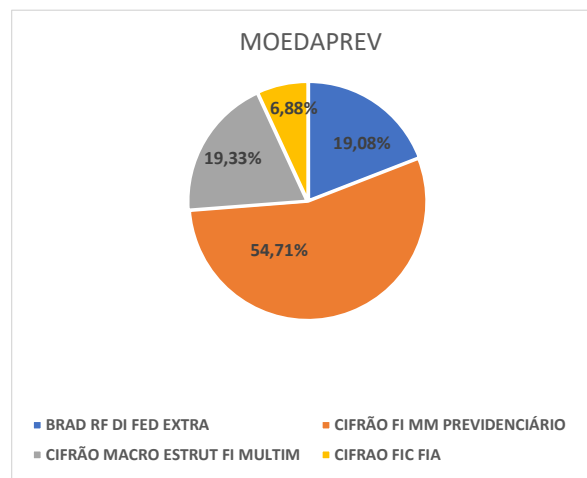
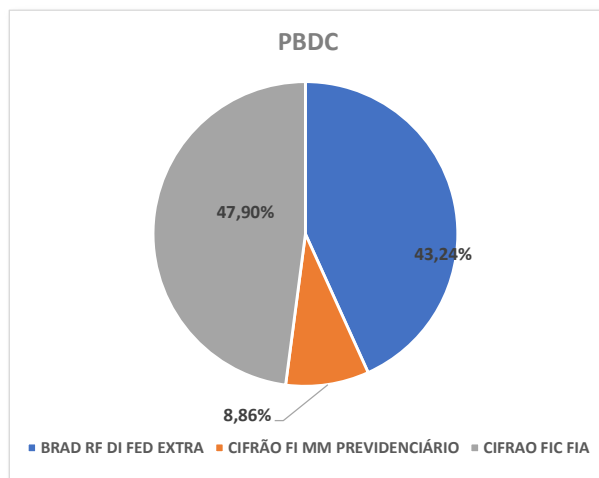
(9) Início Julho de 2023

Carteira dos Fundos de Investimentos - 2025



	PBDC	MOEDAPREV	PGA	TOTAL
BRAD RF DI FED EXTRA	7.830.646,77	39.485.627,58	9.105.478,55	56.421.752,90
CIFRÃO FI MM PREVIDENCIÁRIO	1.604.079,00	113.206.950,03	822.437,43	115.633.466,46
CIFRÃO MACRO ESTRUT FI MULTIM	-	40.000.760,08	-	40.000.760,08
CIFRAO FIC FIA	8.675.317,64	14.237.076,09	-	22.912.393,73
Total FI	18.110.043,41	206.930.413,78	9.927.915,98	234.968.373,17

Em dezembro de 2025, os TPF, que antes eram controlados por Carteira Própria, passaram a ser controlados pelos FUNDOS CIFRÃO PBDC FIF ALM e CIFRÃO MOEDA FIF ALM. A partir de janeiro de 2026 esses saldos e suas performances serão apresentadas neste relatório.

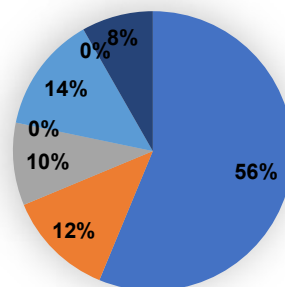


Custos com Administração dos Investimentos - 2025



Descrição		1º Trim	2º Trim	1º Sem	3º Trim	4º Trim	2º Sem	Ano	Patrimônio R\$	% Despesas s/ Patrimônio
Gestão externa										
Taxa de Administração - Fundos Exclusivos(1)	■	111.252	122.947	234.199	94.411	120.636	215.047	449.245	178.546.620	0,25%
Taxa de Administração - Carteira Administrada(2)	■	13.393	24.039	37.432	26.242	26.785	53.027	90.459	303.484.211	0,03%
Taxa de Administração - Fundos Não Exclusivos	■	16.785	15.436	32.221	17.567	20.467	38.035	70.255	56.421.753	0,12%
Taxa de Performance(3)	■	-	-	-	168.663	-	168.663	168.663		
SELIC / CETIP / CBLC / CVM / Outras	■	29.171	66.785	95.956	28.574	28.984	57.558	153.514		
Auditoria	■	-	-	-	-	-	-	-		
Custódia	■	16.322	17.001	33.323	17.490	17.708	35.197	68.520		
Total		186.922	246.208	433.130	352.947	214.580	567.527	1.000.657	538.452.584	0,19%

Fonte: Santander Securities Service e 4UM Investimentos



Observações:

- Despesas incorridas dentro dos Fundos de Investimentos, onde a CIFRÃO realiza suas aplicações;
- Carteira Administrada (TPF);
- Taxa de Performance jul/2025, sobre Fundo Exclusivo Multimercado, gestor UBS, referente ao 1º semestre de 2025.

- Taxa de Administração - Fundos Exclusivos(1)
- Taxa de Administração - Carteira Administrada(2)
- Taxa de Administração - Fundos Não Exclusivos
- Taxa de Performance(3)
- SELIC / CETIP / CBLC / CVM / Outras
- Auditoria
- Custódia